

Ankermoor Primary Academy

SEND Newsletter

Issue 8 – September 2024



Dear Parents and carers,
Welcome to our half termly SEND newsletter – Addressing all things related to Special Educational Needs and Disabilities!
I hope you have had a great summer and that your child has had a good start to the term.

I am very privileged to be working as the new SENDCO at Ankermoor and it has been lovely to meet or talk to many of you. I will be based at Ankermoor every Wednesday, however, I can be contacted by email at SEND@Ankermoor.org on the other days of the week and I will endeavour to respond to you as quickly as possible. Please do email me or speak to the office if you would like to arrange to meet or for me to contact you.

I look forward to working with you in order to achieve the best possible outcomes for our children.

Shirley-Anne Magill
SENDCO

Special Educational Needs (SEND) and Disability Register

What does it mean if my child is on the SEND register?

It means they are receiving support in school that is additional to and different from other pupils of the same age. Once on the SEND register pupils receive support which is best matched to their needs. This ensures that the appropriate support is put in place in order for your child to make progress and meet their planned outcomes/ targets.

How will I know if my child is on the SEND register?

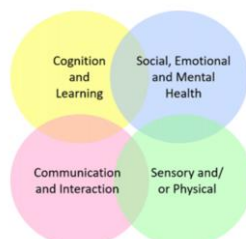
You will have had communication from your child's class teacher or SENDCO informing you that your child is on the SEND register. We will always work in collaboration with parents to ensure they are happy with all decisions made regarding the education of their child.

Why has my child been selected to go on the SEND register?

Class teachers, support staff and SLT work together to assess pupils regularly and if it is felt that a pupil is not making expected progress or they are unable to access an age-appropriate curriculum, or if outside agencies are supporting, pupils may enter onto the SEND register or continue to be monitored closely.

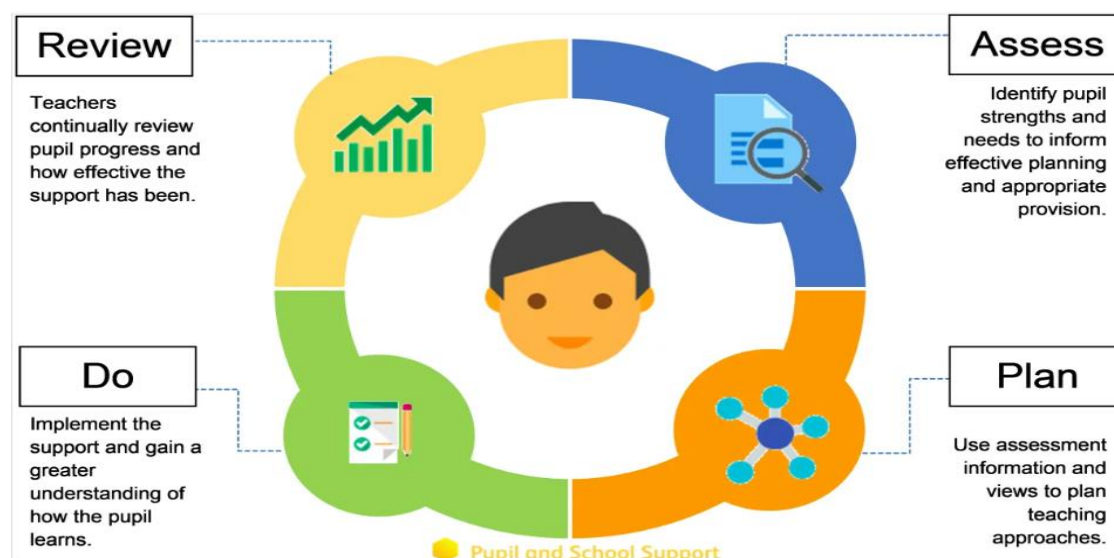
How long will my child be on the SEND register?

Pupils will only be on the SEND register for as long as is necessary and whilst they are receiving additional support. The SEND register is reviewed regularly by the SENDCO and any changes will be communicated to parents.



How will my child be supported?

Your child will be supported in school through a four-part process known as the graduated response made up of a cycle of assess, plan, do and review.



Assess – teachers and parents (in some cases drawing on support of other professionals) will help assess the individual needs of the child and identify specific barriers to learning.

Plan – an individual learning plan will be drawn up identifying targets to help support your child. This will include specific short-term targets along with provision and support needed to help your child make progress towards their targets.

Do – the class teacher will be responsible for ensuring that the provision and support is in place. Your child may also receive additional support or intervention in school, including those delivered by other adults.

Review – The teacher will meet with you at least once a term to review your child’s plan and identify the next steps to support your child. The class teacher or SENDCO will arrange these meetings. We greatly value the views of parents and carers as part of the review process.

	Interim reviews	Review and new plans
Autumn Term	Week beginning 14 th October 2024 Teachers to meet with parents to discuss plans during parents evening.	Teacher complete reviews and create new plans w.b. 2 nd December 2024 Teachers to share new plans and invite parent comments and feedback.
Spring Term	Week beginning 10 th February 2025 Parents to meet teachers to discuss plans during parent meetings.	Teacher complete reviews by 4 th April Teachers to share plans and invite parent comments and feedback.
Summer Term	By Friday 16 th May Teacher carry out interim reviews	By 11 th July Final review and new plans Teachers to meet and parents and review and create new plans.

Where to find information about services and support for children with SEND – Staffordshire Local Offer

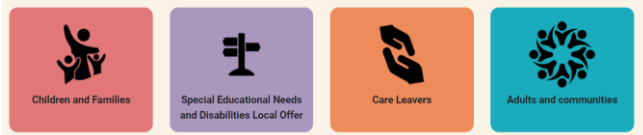
Staffordshire Local Offer provides information in one place for children and young people aged 0–25 with Special Educational Needs and Disabilities, their parent/carers and professionals.

The Local Offer includes information on local services to help children, young people, parents and carers make choices about the support they receive.

Access the Local Staffordshire Offer here:
[Staffordshire Connects](#)

Welcome to Staffordshire Connects

Search and find help and support in your community

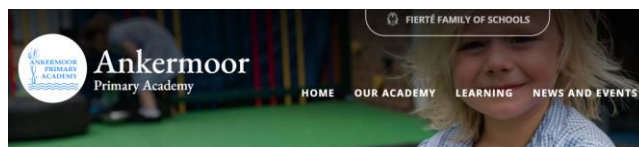


More information
You can find further information about Special Educational Needs on the Ankermoor Primary Academy website.

This will have links to previous newsletters, our SEND information report and other links.

You can find the link here:

[Ankermoor Primary Academy – SEND](#)



**Information
Advice & Support
Service**

To contact Staffordshire SENDIASS:

Tel: 01785 356921

Email: sfps@staffordshire.gov.uk

You can find out more information at:

www.staffs-iass.org

Helpline Number:
01785 356921

Staffordshire SENDIASS

- is impartial
- is confidential
- is accessible by phone, email or face-to-face
- has staff who are legally trained
- works in partnership with others.

Can offer information about SEN and disability including:

- Staffordshire policy and practice
- The Local Offer
- The law on SEN and disability
- The law on Health and Social Care
- Personal Budgets
- information on how to resolve disagreements, including complaints, mediation and appeal
- ...and more

Further support for parents with Special Educational Needs can be found by contacting SENDIASS.

They provide an individual information, advice and support service to children and young people.

“Staffordshire SENDIASS provides a free impartial and confidential service to Staffordshire families.

We offer a service to parents and carers of children and young people aged 0 – 25 years with SEND Covering Education, Health and Social Care issues. We also offer a service to children and young people aged 0-25, with SEND.”



Parent/Carer Cause for Concern

Child's Name: **D.O.B:** **Class:**

.....

Child's strengths and achievements:

Concerns at home:

Concerns at school:

Parent/Carer information:

A description of all available information about your child.

Areas of concern:

- | | | |
|------------------------------------|------------------------------------|--|
| <input type="checkbox"/> Visual | <input type="checkbox"/> Auditory | <input type="checkbox"/> Communication/Speech |
| <input type="checkbox"/> Emotional | <input type="checkbox"/> Behaviour | <input type="checkbox"/> Attendance |
| <input type="checkbox"/> Physical | <input type="checkbox"/> Medical | <input type="checkbox"/> Punctuality |
| <input type="checkbox"/> Social | <input type="checkbox"/> Eating | <input type="checkbox"/> Other (Please state): |

Signed: **Date:**

.....

Please email to SEND@Ankermoor.org to return to Mrs Magill, SENDCO